



# ASSENT STEEL INDUSTRIES L.L.C

## CORPORATE PROFILE





# About Us

Established in 2008, ASSENT STEEL INDUSTRIES L.L.C is one of the largest structural steel fabrication and erection companies in the Middle East that can transform customer’s complex designs into iconic structures through a fully integrated “One-Stop-Shop” structural steel design-build solution for a full range of manufactured steel products including hot-rolled structural steel structures, Pre-engineered Buildings, Cold form Purlins, Decking sheets, single skin and sandwich panels cladding.

ASSENT STEEL is a subsidiary of the financially strong leading GCC regional vertically integrated construction conglomerate, ASGC Holdings LLC., who employs more than 18,000 personnel and has a portfolio of iconic mega projects executed in the GCC region, Africa, and UK. ASGC was established in 1989 in the United Arab Emirates and has grown over the last 33 years, to a \$1bn/ year revenue company.

ASSENT STEEL’s state-of-the-art 210,000 m² manufacturing facility located in Dubai, UAE, includes a fully covered and insulated fabrication facility of over 105,000m², that can produce 120,000 tons per year of fabricated steel products. Equipped with the GCC region’s largest single collection of advanced steel fabrication equipment ASSENT STEEL has fabricated since its first delivery in 2011 over 650,000 tons of steel to the highest international quality standards for many of the industry leading EPC contractors.

ASSENT STEEL self-performs the majority of its fabrication services with its highly skilled workforce of 1,600 employees and through its well established formal training and employee welfare programs consistently delivers execution excellence to the highest international QHSE standards. This includes the provision of preventative health measures, sport facilities, food catering services at its facility and worker accommodation camps, and employee well-being programs focused on awareness, support, and pro-active management of employees, including the physical and mental wellbeing of all its employees.



# ASSENT STEEL’s Strong Parent - ASGC Group at a glance

Leading player in Dubai’s Construction Industry delivering many iconic projects.



## ASGC Subsidiaries

- Steel Fabrication, Erection
- Main Contractor – Mid Sized Projects
- Ready Mix Concrete
- Mechanical, Electrical, Plumbing
- Pre-cast Building Products & Blocks
- Interiors, Fit-out & Joinery
- Masonry, Hourdi, Paving, Sholin Blocks
- Architectural Facade & Glazing

## Key Market Sectors & Iconic Projects Delivered

<b>Commercial</b> Business Central Towers	<b>Leisure</b> Marsa Al Arab Hotel	<b>Health Care</b> Parkview Hospital	<b>Residential</b> Baroque Residential	<b>Social Infrastructure</b> Coca-Cola Arena	<b>Transport</b> Dubai Metro



# OUR CORE VALUES



## SAFETY

We believe that it is essential that everyone goes home safely everyday.



## QUALITY

We are committed to the highest standards in everything we do. This gives confidence in each other and to all our stakeholders.



## WE DELIVER

Achieving our schedule target is a core responsibility. We deliver on time.



## INTEGRITY

We report transparently. We overcome our challenges in an open manner because we value integrity, and we recognize that all will benefit from open discussion and group awareness.



## FINANCIAL RESPONSIBILITY

We understand the importance of cost, achieving value and being cash positive. Our focus is to support our business stability and our stakeholder relationship.



## LEARNING

Every day we seek to learn from our experiences. These learnings positive and negative support our growth and future success.



## SUSTAINABILITY

We believe Sustainability is a journey of continuous improvement and we are committed to reducing our business impact on the environment and using materials and resources to meet our Sustainability goals.



## RELATIONSHIPS

We value each other and it is important that every day we invest time, respect and understanding on our relationships.



## DATA

We believe that discussions based on data and objective analysis creates an environment that supports success and we overcome disagreements by professional dialogue and always supports the decision once it is made.



# SERVICES



STATICAL DESIGN



CONNECTION DESIGN



3D MODELLING



PREPARATION OF DRAWINGS



PROCUREMENT



FABRICATION



PAINTING AND FIREPROOFING

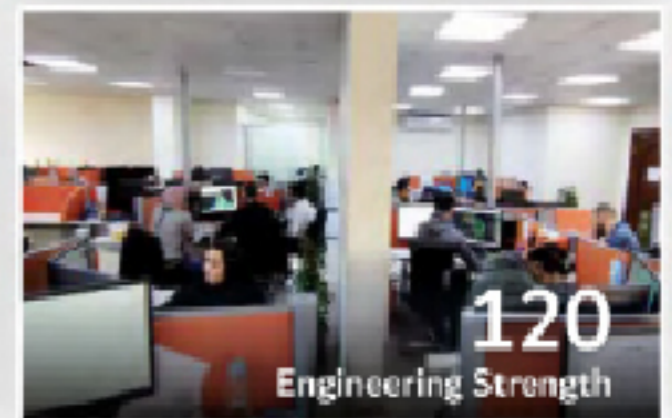
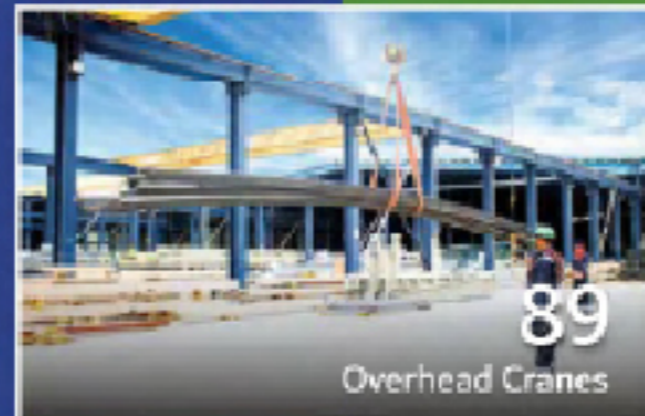
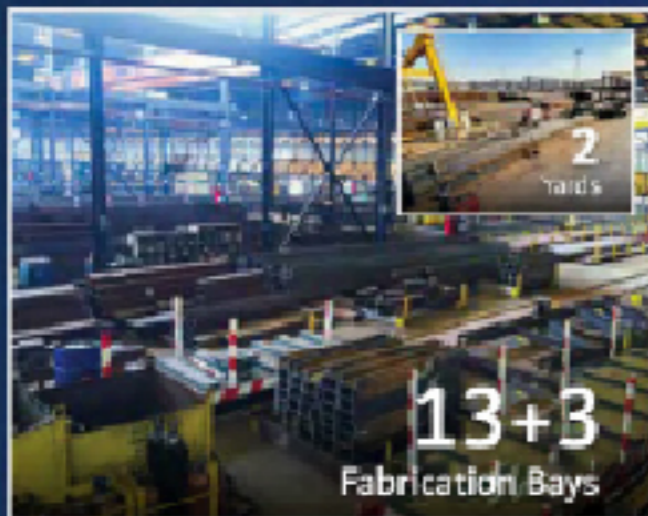


PACKING AND DISPATCH



INSTALLATION

# ASSENT STEEL IS THE MOST POWERFUL GCC FABRICATOR



# ASSENT STEEL - OUR HISTORY

At ASSENT STEEL, we understand that our Structural Steel is central to the success of important, complex and prestigious projects. All of our actions are taken to exceed our clients' project expectations, and through strong partnering principles, we strive to be an Excellent Structural Steel Fabrication provider that is recognized as a preferred supplier for our customer's next project. We have focused on making ASSENT STEEL a great place to work and we have invested in our people, including their important formal qualifications and providing an environment for growth.



## Doha Metro Phase 1

ASSENT STEEL supplied, fabricated & installed 11,200 tons of steel for Qatar Rails and Fujita Corporation. Phase 1 consists of the design and construction of an operational driverless Metro network with line length of 86.23km, 36 stations of which 35 are fully equipped stations, a main depot and two stabling yards, track work, railway systems and rolling stock.



## Abu Dhabi Plaza

Abu Dhabi Plaza is a major mixed-use development located in Astana, Kazakhstan, comprising of a retail podium, residential apartments, international grade office space, and leisure facilities. ASSENT STEEL supplied, fabricated and installed 21,000 tons of steel for CCC / Arabtec.



## Qurrayah Power Plant

ASSENT STEEL supplied & fabricated 22,000 tons of steel for Samsung C & T in KSA. Qurrayah Power plant is a Cobined Cycle IPP that included : Gas turbines (12 nos), Heat recovery system, generator (12 nos), Steam turbines (6 nos), Transformers, Switchgear, Substation, Offsites & utilities.



## ASSENT Establishment

Our fabrication yard is modern, covered and huge. We have over 105,000m<sup>2</sup> of covered facilities and the UAE's largest single collection of modern CNC equipment. We can produce 120,000Tons of steel per year.

2016

2014

2012

2008

2018

2019

2021

2022



## Sandwich Panel & Light Gauge Steel State of the Art Factory

Established ASSENT Profiles (ASP) with state-of-the-art equipment & machineries. Our PIR Panels have the best fire rating certification (FM Approval)



## SeaWorld Abu Dhabi

ASSENT STEEL wins supply of more than 14,000 Tons for Miral & SeaWorld Entertainment on the SeaWorld Project in Abu Dhabi. The SeaWorld project was a complex supply and erection project of multi-levels including major truss spans.



## ASSENT STEEL International Footprint. Established USA office



## New Name - Same Trusted Steel Fabricator

ASSENT STEEL INDUSTRIES L.L.C



# Safety is Our Core Value



Heat Stress Campaign

# Hand Injury Prevention Campaign



## ONE TEAM ONE GOAL

- ▶ We believe in achieving the highest standards of health, safety and security through all available mechanisms in our industry.
- ▶ We recognize that we can only achieve our business objectives if our operational performance and the products we deliver meets customer requirements, industry standards and are delivered safely.
- ▶ We strive to align our business practices and principles to the highest global international standards and lives by a safety ethic to continually achieve a 'Zero Accident' project environment.

ONE TEAM  
GOAL  
SAFE EVERY DAY

### IOSH Training



### Management Walk downs



### Lifting Campaign



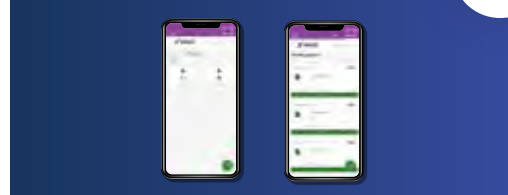
### ASSENT Asks



### Supervisor Awards



### Ben Solutions App



## SAFE EVERY DAY

- ▶ We live by our "ASSENT ASKS Program".
- ▶ We have a ZERO Tolerance policy on the use and abuse of drugs and alcohol.
- ▶ The company includes environmental and social responsibility considerations into all its strategic and operational decisions and believes that acting in this manner is not only a business imperative but provides a competitive business advantage in the long run.
- ▶ Ben Soluton App to track all activities linked to Health, Safety and Environment in the company to enhance the performance of HSE and to save lives, assets and protect the environment.

# World Class Quality Systems and Certifications

## World Quality Day



ASSENT STEEL's IMS ensures a 'right first time, everytime' execution with minimal or no rework that could cause project delays and ASSENT STEEL complies with all international standards and certifications.



ASSENT STEEL manufactures its products under strict controlled conditions and in accordance with well established methods, tools, systems and processes as laid out by the Project Quality Control Plan and ITP's.



ASSENT STEEL recognizes that a world-class Quality Program goes hand in hand with a world class Safety Program and ASSENT STEEL's "Behaviour" based Integrated Management Systems (IMS) will aim to exceed client expectations in terms of quality and reliability by consistently delivering high-quality workmanship, products and services.



All employees are required to perform their activities on the project in accordance with IMS. All Quality Control inspections and test plans will be conducted in accordance with the Project Quality Control Plan whereby the Project Certified Quality Inspectors will monitor, examine, and review activities to ensure quality is maintained throughout the duration of the project.

ASSENT STEEL'S  
CULTURE IS  
"QUALITY,  
RIGHT FIRST TIME,  
EVERYTIME"



## JOURNEY OF ASSENT STEEL CERTIFICATIONS



**QUALITY**  
RIGHT FIRST TIME. EVERYTIME



ISO 9001:2015



ISO 14001:2015



ISO 45001:2018



Canadian Welding  
Bureau CSA  
Standard W471



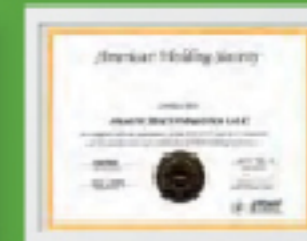
ISO 3834-2:2021



EN 1090-1:2009 /  
A1:2011



AISC Building Fabricator  
C-00039760



American Welding Society  
AWS B.5.17 & QC Standards



Platinum LEED  
Certified

# Excellent Project Execution



## UAE

Modern, positive and energetic nation.

Huge Oil & Gas hub in a major Oil & Gas Region.

Business friendly environment.

Huge industrial infrastructure supporting the best international standards.



## COMMITMENT TO EXECUTION

Safe, high quality and on time delivery - our commitment is absolute.

We use Primavera for overall project planning.

We have bespoke progress monitoring tools that track every piece of steel.

Connection between our operations teams is seamless and constant.



## ENGINEERING

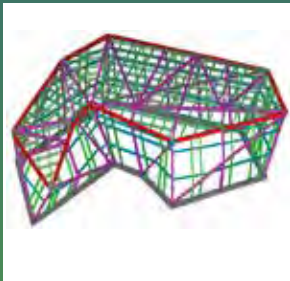
Our team aligns with project & customer demands.

We design, we detail for fabrication and construction activities.

We have the full suite of engineering tools, systems and processes, for structural steel member design and fabrication shop drawings using 3D TEKLA, CAD etc.

Our core engineering value is to produce accurate documents.

We measure our performance in every step.



## PRODUCTION AND HANDLING

We provide a safe environment to work.

We control every process and every piece of steel moving through our workshop.

We use StruMIS to control our steel from arrival to dispatch.

Our workshop has a perfect production flow from material receipt to dispatch.



## FABRICATION

We have dedicated leaders for sizing, fabrication, welding and painting.

We work indoors with both day and night shifts 6 days per week.

We self-perform blasting and painting and through preferred supplier relationships conduct subcontracted fireproofing operations within our facility.

We have long-standing relations with all of the UAE's major galvanizing companies who have the latest international state-of-the-art facilities that can work with member sizes up to 14.5m



## INTEGRATED QMS & INSPECTION/ NDT

Quality and Production work together for a continuous inspection regime.

We focus on accurate progress updates linked to QC approval of each activity.

We regularly train and certify our teams for disciplined output.



## DISPATCH/ TRANSPORT

We are located an hour from 2 major UAE ports.

We are located in one of the world's largest logistics/ travel hubs.

We have multiple container packing options through experience with many clients.



## ERECTION

ASSENT STEEL provides a complete, integrated solution for our clients including erection and construction services.

We employ a highly qualified and experienced construction team that has a capability to install upto 4,000 tons of structural steel per month.



Engineering team can support clients by all the following services:



Design of Static systems



Member Design



Connection Design



3D Modelling



Material Take-off



Preparation of GA drawings



Preparation of Fabrication drawings



Preparation of Erection drawings



Co-ordination with other trade works



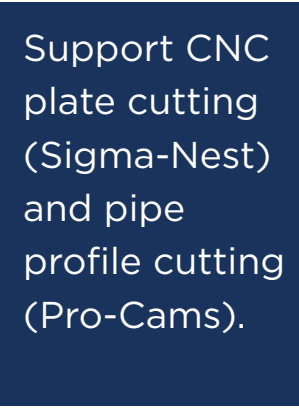
Value Engineering & Design Proposals

# Engineering

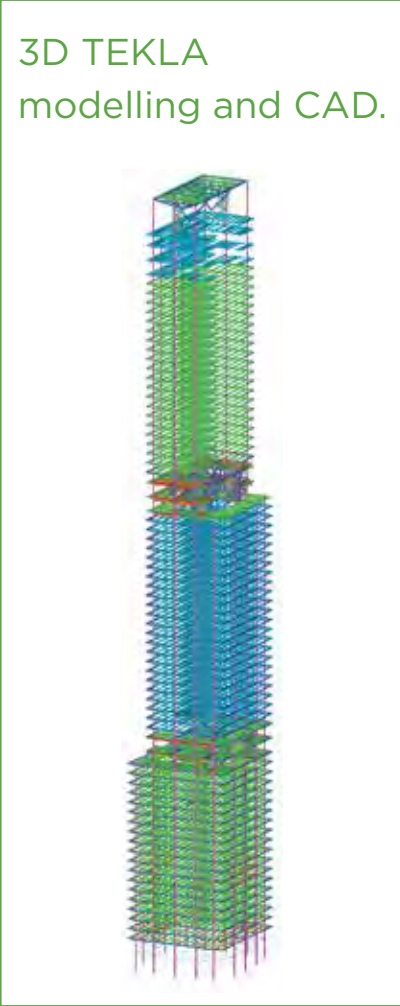
ASSENT STEEL has an advanced engineering offices in Cairo, Egypt and Dubai with 104 experienced design and detailing engineers equipped with the latest advance software, tools, systems and process.



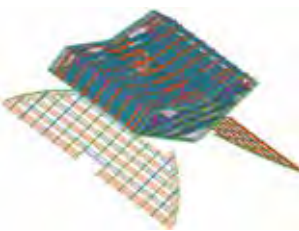
Structural member and connection design.



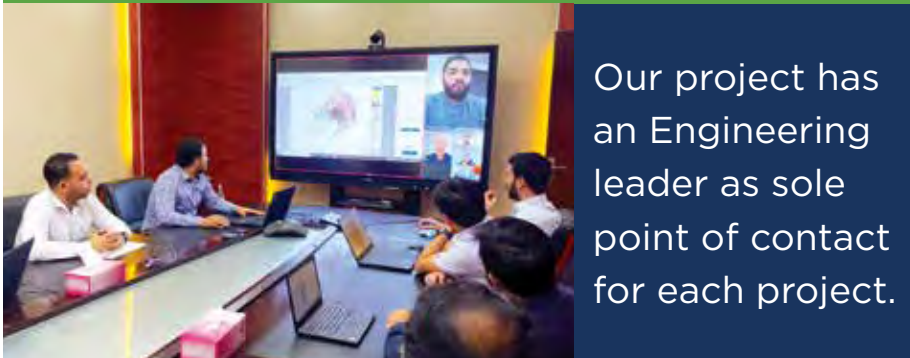
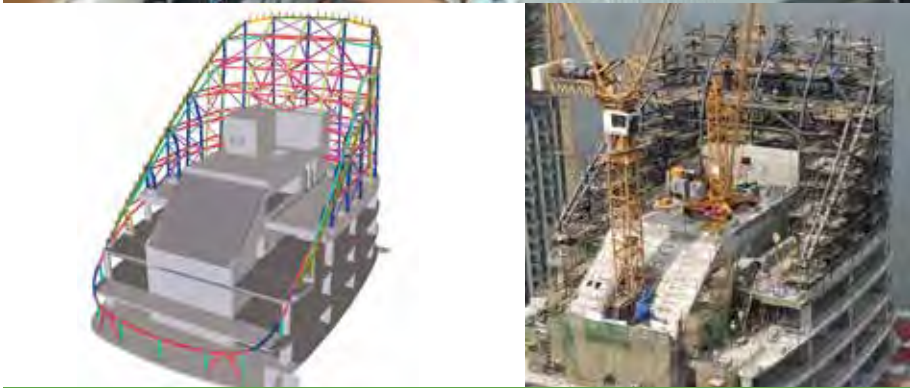
Support CNC plate cutting (Sigma-Nest) and pipe profile cutting (Pro-Cams).



3D TEKLA modelling and CAD.



We appoint a project design engineering and model expert as part of our design team.



Our project has an Engineering leader as sole point of contact for each project.

## Software Used



# World Class Facility

## HEAVY STRUCTURES



CNC Sizing Bay – MPS Line 01 & MPS Line 02  
Profile Cutting, Profile Drilling, Profile Coping & Plate Processing.



Heavy Fabrication Bay – FAB01 & FAB02

Bay FAB01 – Length 120m, width 23m equipped with 5 No's x 15 tons capacity overhead cranes 2 No's x 30 tons ground trolleys.

Bay FAB02 – Length 120m, width 23m equipped with 5 No's x 15 tons capacity overhead cranes 2 No's x 30 tons ground trolleys

## MEDIUM HEAVY STRUCTURES



CNC Sizing Bay – MPS Line 03 & MPS Line 04  
Profile Cutting, Profile Drilling, Profile Coping & Plate Processing.



Heavy Fabrication Bay – FAB03 & FAB04

Bay FAB03 – Length 120m, width 23m equipped with 5 No's x 10ton capacity overhead cranes 2 No's x 20ton ground trolleys.

Bay FAB04 – Length 120m, width 23m equipped with 5 No's x 10ton capacity overhead cranes 2 No's x 20ton ground trolleys

## LIGHT STRUCTURES



CNC Sizing Bay – MPS Line 07 & MPS Line 08  
Angle Processing, Plate Bending, Plate Shearing & Pipe Sizing.

Heavy Fabrication Bay – FAB07 & FAB08

Bay FAB07 – Length 120m, width 23m equipped with 5 No's x 5ton capacity overhead cranes 2 No's x 10ton ground trolleys.

Bay FAB08 – Length 120m, width 23m equipped with 5 No's x 5 on capacity overhead cranes 2 No's x 10ton ground trolleys

## CNC MACHINES

Machine: CNC Band Saw  
Brand: FICEP  
Model: 1260 LBH



Machine: CNC Drilling  
Brand: FICEP  
Model: 1203 DF



Machine: CNC Thermal Coping  
Brand: FICEP  
Model: 1201 RC



Machine: Shearing & Press Break  
Brand: GIZELIS  
Model: 3010



## HEAVY BUILT UPS

Size – 48m x 75m  
Specialist workshop for heavy, medium assembly of built-up girders, columns, trusses and box sections. Fully automated.



## PRE-ENGINEERED BUILDING (PEB) STRUCTURES

Brand: Primo Automation  
Model: ABW 2100



## INVENTORY STOCK AREA

Size: 100m x 172m  
Material Handling by 4No.s of Gantry Cranes  
Capacity of Gantry Crane = 10 T each



## PROJECT STOCK AREA

Size: 234m x 75m  
Material Handling by 15No.s of Overhead Cranes  
Capacity of Overhead Crane = 10 T each



# Blasting & Painting

ASSENT STEEL has the ability to apply all forms of protective coatings to its steel products, utilizing its state-of-the-art dedicated blasting and coating facilities. We have eight fully enclosed and environmentally controlled painting bays covering an area of 30,000m<sup>2</sup>, fully supported by our auto-blast and manual blasting facility. Our highly sophisticated painting facility can apply all forms of coatings including fireproofing, epoxy, acrylic, polyurethane etc. using ASSENT STEEL's highly trained painting team NACE certified inspectors of 150+ employees.

We have a high quality painting area of 30,000m<sup>2</sup> that has a capacity of over 8,000tons of steel per month and can apply cementitious/intumescent fireproofing on our structural steel compliant of stringent International standards.

## Galvanization

We outsource galvanization of steel members to our long-standing suppliers that have a capacity in excess of 5,000 tons per month and their Vat size is 14.5m X 1.6 X 2.7m and can coat member sizes up to 14.4m X 1.5 X 2.4m

### Painting Area :

Covered Painting Area = 30,000 Sqm.  
Size - 100m x 20m (No. of bays = 8)  
Equipped with 16 no's of over head cranes 10ton capacity each, CNC ground trolley for swift movement. Each bay has 1 x 10ton capacity of ground trolley.

### Pre-Blasting :

3 No's of Blasting Machines with following Details:  
In Feed Conveyors - 44m length for feeding the material to pre-blasting through shot blasting machine.  
Out feed conveyors - 24m length to feed this material to the CNC sizing bays.

### Post-Blasting :

2 No's of Blasting Machines with following Details:  
Size - 238m x 18m  
110m in feed conveyors & collecting this material from all fabrication bays to post blast before painting.  
60m out feed conveyors to feed this material to the painting area.

## Key Facts

- ASSENT STEEL is a "leading AISC certified fabricator of structural steel.
- An annual production capability of 120,000 tons per year of fabricated steel products for diverse projects in sectors such as O&G Process Plants, Airports, Bridges, Power plants, high-rise building, Showrooms, Terminal Buildings, Factories etc.
- HSE management system is reflected in our British Safety Council membership and OHSAS 18001 (health and safety) and BS EN ISO 14001 (environment) accreditations.
- Delivered nearly 650,000 tons of fabricated steel products in last 10 years.
- ASSENT STEEL has a factory size of 210,000m<sup>2</sup> including a 105,000m<sup>2</sup> fully covered state-of-the-art manufacturing facility located in Dubai, UAE, that is equipped with the GCC region's largest single collection of advanced steel fabrication equipment.

# Sustainability

ASSENT STEEL is committed towards Sustainable Development and growth as an integral part of its business philosophy. The company includes environmental and social considerations into all its strategic and operational decisions and believes that acting in a Sustainable manner is not only a business imperative, but provides us a competitive advantage in the long run. We greatly value relationships with our stakeholders and consider them as partners in our growth and development. ASSENT STEEL also endeavors to engage with our neighboring communities in the vicinity of our operations to promote an overall and inclusive model of growth. ASSENT STEEL is committed to efficient management of natural resources, energy and wastes, and minimize the impact of our processes on the ecology. We ascertain and continually improve the safety and environmental efficiency of our products and services, providing our customers with only the most eco-efficient options. ASSENT STEEL also continually evaluates its performance with respect to all sustainability parameters. ASSENT STEEL aims for an inclusive growth involving all its stakeholders and contributing to UN's Sustainability Vision 2030.

### Our Commitment to UN Sustainable Development Goals

3 GOOD HEALTH AND WELL-BEING

10 REDUCED INEQUALITIES

5 GENDER EQUALITY

11 SUSTAINABLE CITIES AND COMMUNITIES

8 DECENT WORK AND ECONOMIC GROWTH

13 CLIMATE ACTION

9 INDUSTRY, INNOVATION AND INFRASTRUCTURE

THE GLOBAL GOALS For Sustainable Development



# 5 Core Areas of Focus



Environment



Health and Safety



Our Community



Diversity



Ethics

# Our People

ASSENT STEEL has a diverse workforce and is focused on creating a collaborative high-performance Team culture, where our employees challenge themselves to create a “Expect More” culture that consistently delivers execution excellence in all we do for our customers.

ASSENT STEEL’s commitment to its workforce means providing all our employees with quality work environments that supports their safety and well-being.



- 19 nationalities at ASSENT STEEL (and over 32+ within the ASGC Group).
- ASSENT STEEL leadership represents 8 countries.
- 1600 skilled tradesman in varies specialties such as Fabricators, Welders, Riggers, Steel erectors, and Painters.
- 154 have celebrated their 10 years' service award with ASSENT STEEL in 2021 and 2022.



# Geographical Footprint



WHAT WE HAVE DONE

All Projects



Al Taweela Alumina  
24,000 Ton



Ruwais Refinery Expansion 1, 3, 7  
26,350 Ton



Umm Al Houl Power  
12,000 Ton



Az- Zour North IWPP  
9,500 Ton



Qurayyah Power Plant  
22,000 Ton



Borouge III – O & U  
12,550 Ton



SHAH GAS PKG 1, 2, 3, 4  
11,200 Ton



CFP – MAB 1  
8,000 Ton



Al Dabb'iya Facilities  
19,000 Ton



Rabigh II Refining & Petrochemical  
12,000 Ton

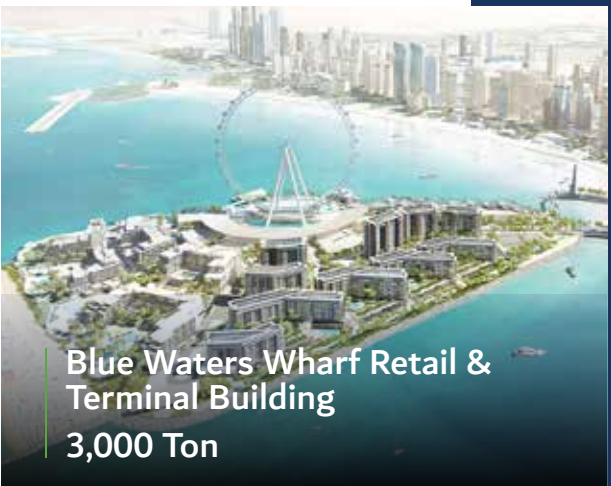
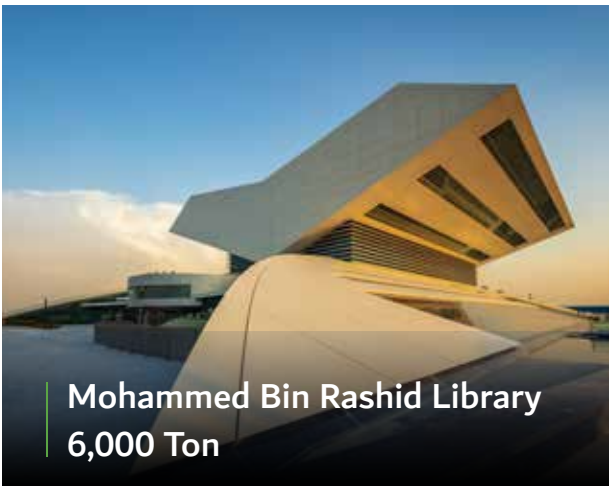


West Qurna I  
10,000 Ton



South Yoloten  
8,000 Ton

OIL AND GAS  
INDUSTRIAL  
POWER PLANTS



All Projects



# OUR PARTNERS

At ASSENT STEEL, we believe in building a rewarding & lasting relationship with our clients.













# ASSENT STEEL USA

In support of North Americas long rich history and capability of steel fabrication, ASSENT STEEL has implemented a geographic expansion strategic plan to become one of the leading overseas suppliers of fabricated structural steel products into the North American market.

Since opening in 2020, its sales office in Houston, Texas, ASSENT STEEL has pre-qualified with over 20 leading US general contractors including, Bechtel, Kiewit, Fluor, Barton Malow Holdings, Clayco, DPR Construction, Brasfield & Gorrie etc. and has commenced tendering for major projects in the US and Canada including, “mega” industrial manufacturing and LNG projects, together with large distribution warehouse and data center projects.

ASSENT STEEL has a business operating model that aligns well with the culture and values of the North American general contractors, and its unique overseas value proposition is designed to deliver market competitive steel products to the highest standards of safety, quality, and corporate social responsibility



# ASSENT STEEL Europe



ASSENT STEEL can deliver cost competitive fabricated steel product solutions on a global basis while adhering to the highest standards of customer specifications and international QHSE regulations. It makes us uniquely qualified to meet client demands for all kinds of Steel Engineering Services in Europe.

# ASSENT STEEL Africa

ASSENT STEEL's operations in the African region include, supplying Steel, PEB and Cladding services. We have accomplished projects across Africa. Our major PEB projects are in locations in Kenya, Ghana and Swaziland. Our supply projects range from direct shipping of Iron-Ore to Liberia, to shipping Bauxite material for port building in Guinea. With these projects, and keeping with the company's vision, ASSENT STEEL strives for rapid scaling potential for accelerated growth, and only the best steel engineering services in Africa, always a step ahead of other Steel companies in Africa.



**PROJECT**  
Western Range DSO Iron Ore - Buildings

**CLIENT, LOCATION**  
Afcons Infrastructure , Liberia Africa

**QUANTITY**  
6,000 Tons



**PROJECT**  
Southern Swamp Associated Gas Solutions Project

**CLIENT, LOCATION**  
Saipem , Nigeria Africa

**QUANTITY**  
3,000 Tons



**PROJECT**  
Port Material Handling – Bauxite Export

**CLIENT, LOCATION**  
Afcons, Guinea Africa

**QUANTITY**  
2,200 Tons



**PROJECT**  
Olkaria I Unit 6 Geothermal Power Plant

**CLIENT, LOCATION**  
Civicon Engineering, Kenya Africa

**QUANTITY**  
800 MT



**PROJECT**  
Kellogg's Tolaram Factory

**CLIENT, LOCATION**  
Roots Civils (PTY) Ltd , Swaziland

**QUANTITY**  
800 MT



**PROJECT**  
Dar Es Salaam – Morogoro Railway

**CLIENT, LOCATION**  
Yapi Merkezi, Tanzania

**QUANTITY**  
320 Tons



# ASSENT STEEL

## Delivery Value Proposition

ASSENT STEEL has a huge monthly production capacity of over 10,000 tons including current/ future available capacity to support our client's prospective projects

ASSENT STEEL has a proven track record with delivery of projects >20,000T to market leading EPC contractors ASSENT STEEL is wholly owned by financially strong ASGC who has annual revenues of ~\$1bn per year and a D&B rating of 5A2.

ASSENT STEEL has over 100 engineers that can provide the full suite of structural steel engineering member/ connection design and draughtsman services utilizing 3D TEKLA modelling, CAD etc.

ASSENT STEEL has developed long-term working partnerships with key steel suppliers and the UAE is the regional Hub for all of the leading global suppliers/ subcontractors.

ASSENT STEEL has a highly skilled and loyal craft workforce of over 1,600 with access to a huge labor pool from the Indian Subcontinent.

ASSENT STEEL has a “Target Zero” safety culture that is supported by a safety program called “ASSENT ASKS” which is similar to safety programs like “Golden Rules”.

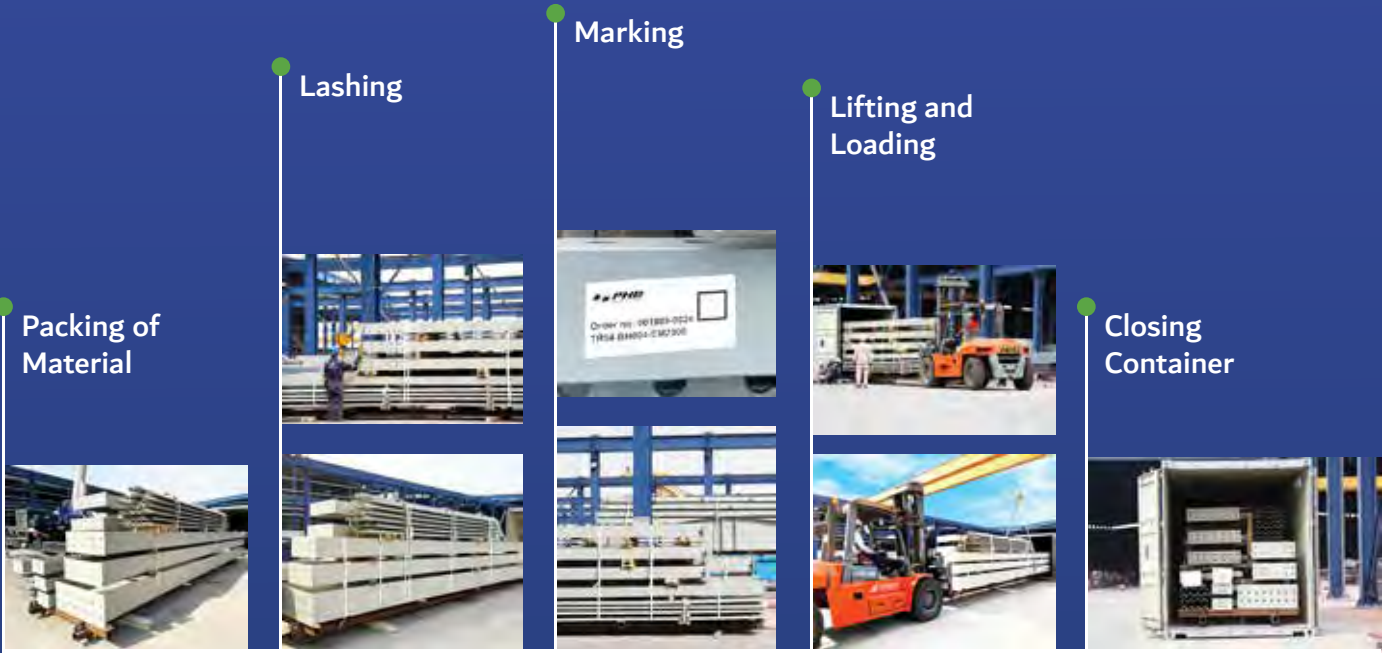
ASSENT STEEL’s Worker Welfare Management System provides its employees with a safe working and clean- living conditions which are subject to regular inspections and audits to monitor compliance with applicable law. ASSENT STEEL strives to provide a happier, healthier and more productive living environment for its workforce, who are the core strength of the organization.

ASSENT STEEL operates a “Right First Time- Every Time” IMS behavior-based quality program in accordance with ISO 9001, 14001, 45001, in addition to being an AISC and CWB approved contractor.

ASSENT STEEL is committed to creating with our clients a “One Company” project culture that is dedicated to achieving world class results to the highest standards of Safety, Quality and Sustainability.



650,000+  
Tons  
Steel  
Delivered



### Container Loading Procedure

## UAE is a Global Business “Gateway” to the World

The UAE is a strategically located business gateway to North America, Europe, Asia and Africa. The UAE has five major ports including the Port of Jebel Ali (Dubai), which is the world’s ninth busiest port. Jebel Ali Port has more than 40 years of experience in logistics and is a state-of-the-art single customs bonded zone facility with over 80 weekly services connecting more than 150 ports worldwide. Other major ports in the UAE include:

- Port of Mina Zayed (Abu Dhabi)
- Mina Rashid Port (Dubai)
- Mina Khalid Port (Sharjah)
- Khor Fakkhan Port (Sharjah)

ASSENT STEEL is strategically located to all of the UAE’s major ports and with the support of the world’s largest freight forwarding companies such as DHL, CH Robinson (CSS) etc. we can offer the full suite of delivery services including, “DDP” in accordance with Incoterms 2020.



● Head Office  
Dubai, UAE

● Branch Office  
USA



## CONTACT US

### Head Office

UAE, GCC & Europe


P.O Box: 38436, 5<sup>th</sup> Roundabout, Dubai Industrial City

Tel : +971-4-247 12 00

Fax : +971-4-422-98 26

Email : [info@assentsteel.com](mailto:info@assentsteel.com)

Website : [www.assentsteel.com](http://www.assentsteel.com)

 [/assentsteel](https://www.linkedin.com/company/assentsteel)

 [@assentsteel](https://www.instagram.com/assentsteel)

 [/assentsteel](https://www.youtube.com/channel/UC...)